

SC-1000-XX-D

MOUNTING BOXES

PRODUCT DESCRIPTION

The SC-1000-XX-D metal mounting boxes are designed to accommodate the modular placement of the SC-1000 integrated security product family and the SW-500 access control system.

The boxes are available in three different sizes, allowing flexible installation to suit the specific needs. All Seawing devices have their own prefabricated place so there is no need to create individual hole positions or buy other boxes. The unified, polished, powder-coated surface finish gives the same, aesthetic appearance to safety devices throughout the building.

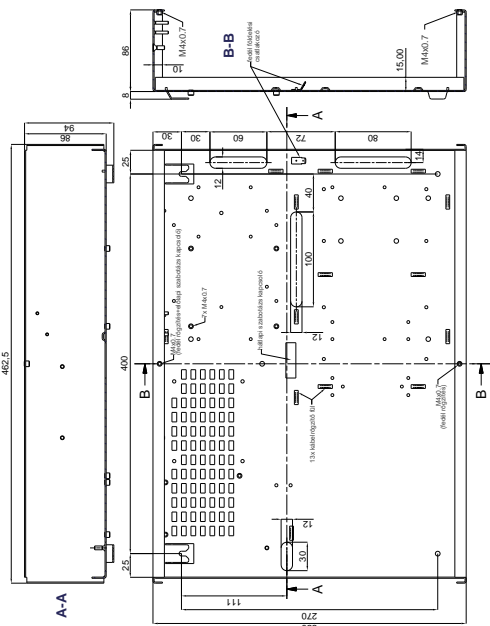
The stable and metal plate cover with front and back panel tamper switches provides good mechanical resistance. Due to the rear spacers, the cable entry is protected and concealed behind the box.

TECHNICAL DATA

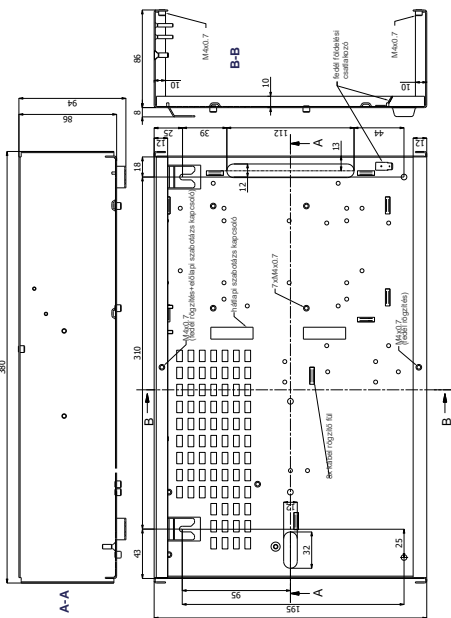
- Metal plate covering
- Three different sizes
- Modular device placement
- Prefabricated holes for SC-1000 and SW-500 system devices
- Front and rear tamper switches
- Rear spacers for cable entry and ventilation
- During installation the cover removable from the front; there is no need for additional space for mounting
- Cover with metric screws
- Cable locking tabs inside the box
- Drill template for fixing
- Possibility to place additional devices on a horizontal mounting plate (for large and medium sized mounting boxes)
- Unified, powder-coated surface finish and appearance (RAL9001 colour)
- Indoor use, protection: IP30

TYPES

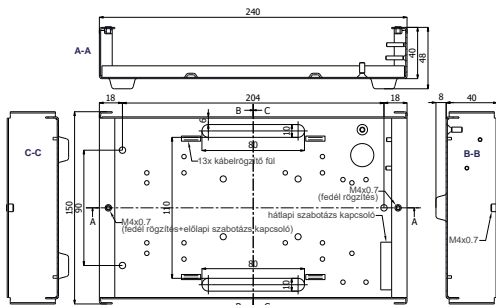
- SC-1000-D Large metal box
- SC-1000-02-D Medium metal box
- SC-1000-03-D Small metal box



SC-1000-D Large sized mounting box



SC-1000-02-D Medium sized mounting box



SC-1000-03-D Small sized mounting box

SPECIFICATION

	SC-1000-D	SC-1000-02-D	SC-1000-03-D
Width:	462,5 mm	380 mm	240 mm
Height:	330 mm	240 mm	150 mm
Depth (without space holder):	86 mm	86 mm	40 mm
Rear space holder thickness:	8 mm	8 mm	8 mm
Weight:	... g	... g	... g
Plate thickness:	2 mm		
Surface:	Polished, powder-coated		
Colour:	Cream white (RAL9001)		

DEVICE PLACEMENT

Device	Type	Assembly example					
		A	B	C	D	E	F
SC-1000-D							
Power supply	Lintap-12V/1A						
	Lintap-12V/2A	1	1	1	1	1	1
Battery	Akku-7						
	Akku-18	1	1	1	1	1	1
Main controller ¹	SC-1000-01	1	1	1	-	-	-
Large size module	SC-1000-06/07						
	SW-500 (DO-12)	1	-	-	-	2	1
Small size module	SC-1000-02/03/04	-	2	-	3	-	2
	CAN-ISOL-1						
Accessories	INTF-485ISO-5	1	1	2	1	1	1
	RELMOD2						
	CAN-ISOL-1						
Accessories on a horizontal mounting plate	INTF-485ISO-5	1	1	1	1	1	1
	RELMOD2						
	SW-N-550						

SC-1000-02-D

Power supply	Lintap-12V/1A								
	Lintap-12V/2A	1	1	1	1			1A	2A
Battery	Akku-7	1	1	1	1			-	-
Main controller ¹	SC-1000-01	1	-	-	-			-	-
Large size module	SC-1000-06/07								
	SW-500 (DO-12)	-	1	-	-			SW-500 (DO-12)	
Small size module	SC-1000-02/03/04	-	-	1	2 ²			-	-
	CAN-ISOL-1								
Accessories	INTF-485ISO-5	1	1	1	1			-	-
	RELMOD2								
	CAN-ISOL-1								
Accessories on a horizontal mounting plate	INTF-485ISO-5	1	1	1	1			-	-
	RELMOD2								
	SW-N-550								

SC-1000-03-D³

Large size module	SC-1000-06/07								
	SW-500 (DO-12)	-	1						
Small size module	SC-1000-02/03/04	1	-						
	SW-N-550								
Accessories	CAN-ISOL-1								
	INTF-485ISO-5	1	-						
	RELMOD2								

¹ Central controller requires 12V / 2A power supply and 18Ah battery is recommended

² A small module SC-1000-02 / 03/04 and the other module can only be SC-1000-02

³ The power supply unit and battery can not be installed in the SC-1000-03-D box

ORDERING INFORMATION

Article nr.	Type	Product name
93MF010152	SC-1000-D	Large metal mounting box
93MF0100157	SC-1000-02-D	Medium metal mounting box
93MF0100162	SC-1000-03-D	Small metal mounting box

Related items which can be installed in Seawing boxes

90EKVEZ0822	SC-1000-01	Main controller, PCB
90EKVEZ0170	SC-1000-02	Access control panel
90EKVEZ1015	SC-1000-03	Intrusion module, panel
90EKVEZ0178	SC-1000-04	Output module, panel
90EKVEZ0224	SC-1000-06	Access module + I/O ports, panel
90EKVEZ0235	SC-1000-07	Access module + I/O portok + serial ports, panel
90EKVEZ0222	kv_DO-12-K	Controller panel
90EKVEZ0222	kv_DO-12-K-UART	Controller panel with serial interface
90EKVEZ0812	SW-N-550-RS-ETH-WB	Lan csatló, panel
06FURZAR750	SW-N-550-WO-ETH-B	Rádiós HUB
90EKVEZ0320	LINTAP2-12V/1A	12V/1A complete mounted power supply card
90EKVEZ0330	LINTAP2-12V/2A	12V/2A complete mounted power supply card
02KIEMOD210	CAN-ISOL-1	CAN-bus galvanic isolator
02HALAKT380	INTF-485ISO-5	RS-485 galvanic isolator
02KIEMOD200	RELMOD2	Relay module
02TAPAKK207	Akku-7	12V/7Ah battery
02TAPAKK280	Akku-18	12V/18Ah battery